

Outline

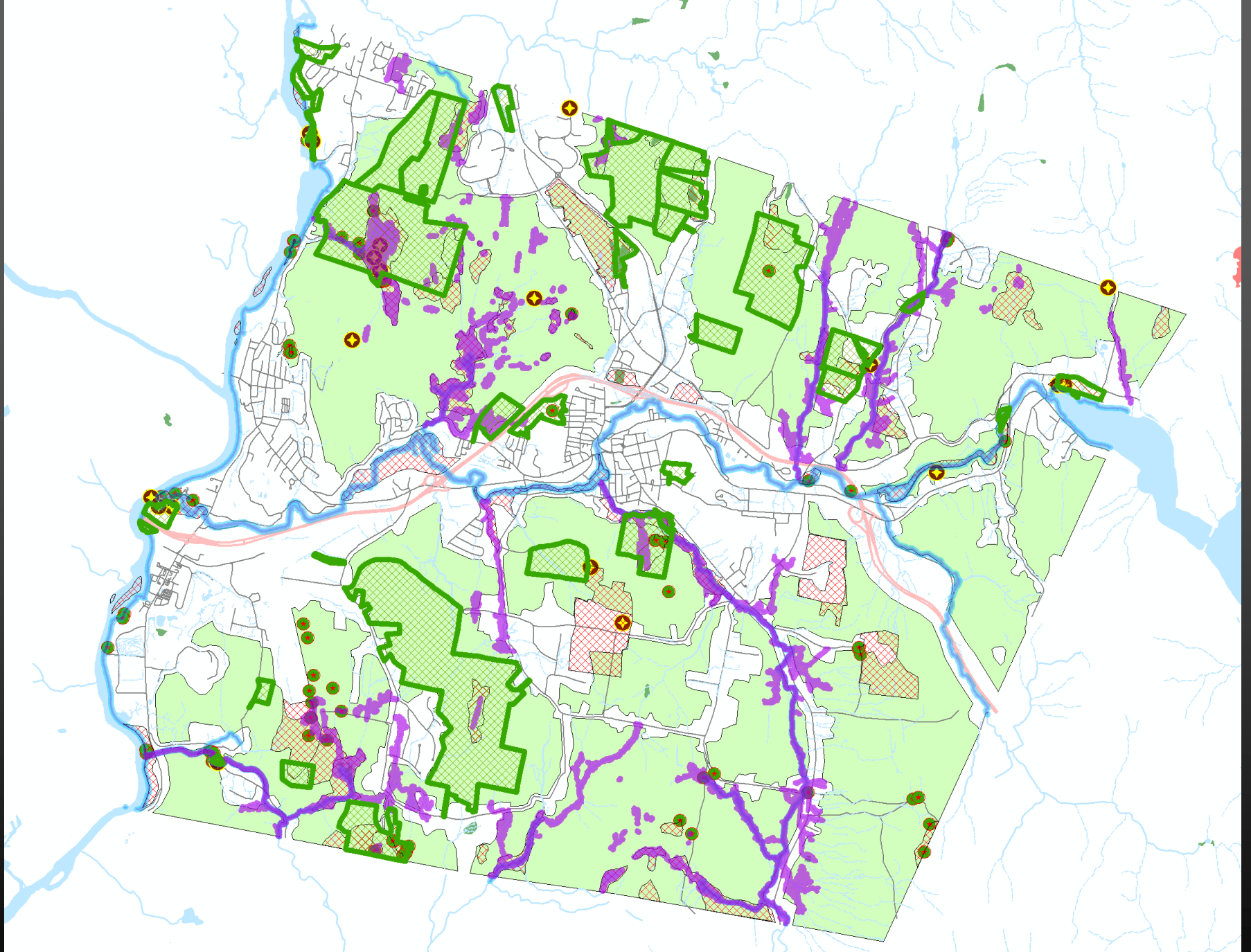
- The Evolving Proverbial Planning “Tool Box” –
Lebanon’s recent journey on this path
 - Conservation Program circa 2003
 - Riparian Corridor Overlay District
 - Wetland Buffer Overlay District
 - Stormwater Regulations
 - Conservation Program 2017, including two projects:
 - * Ticknor Woodlands Conservation Project
 - * Hardy Hill Conservation Project

Lebanon Conservation Program 2003

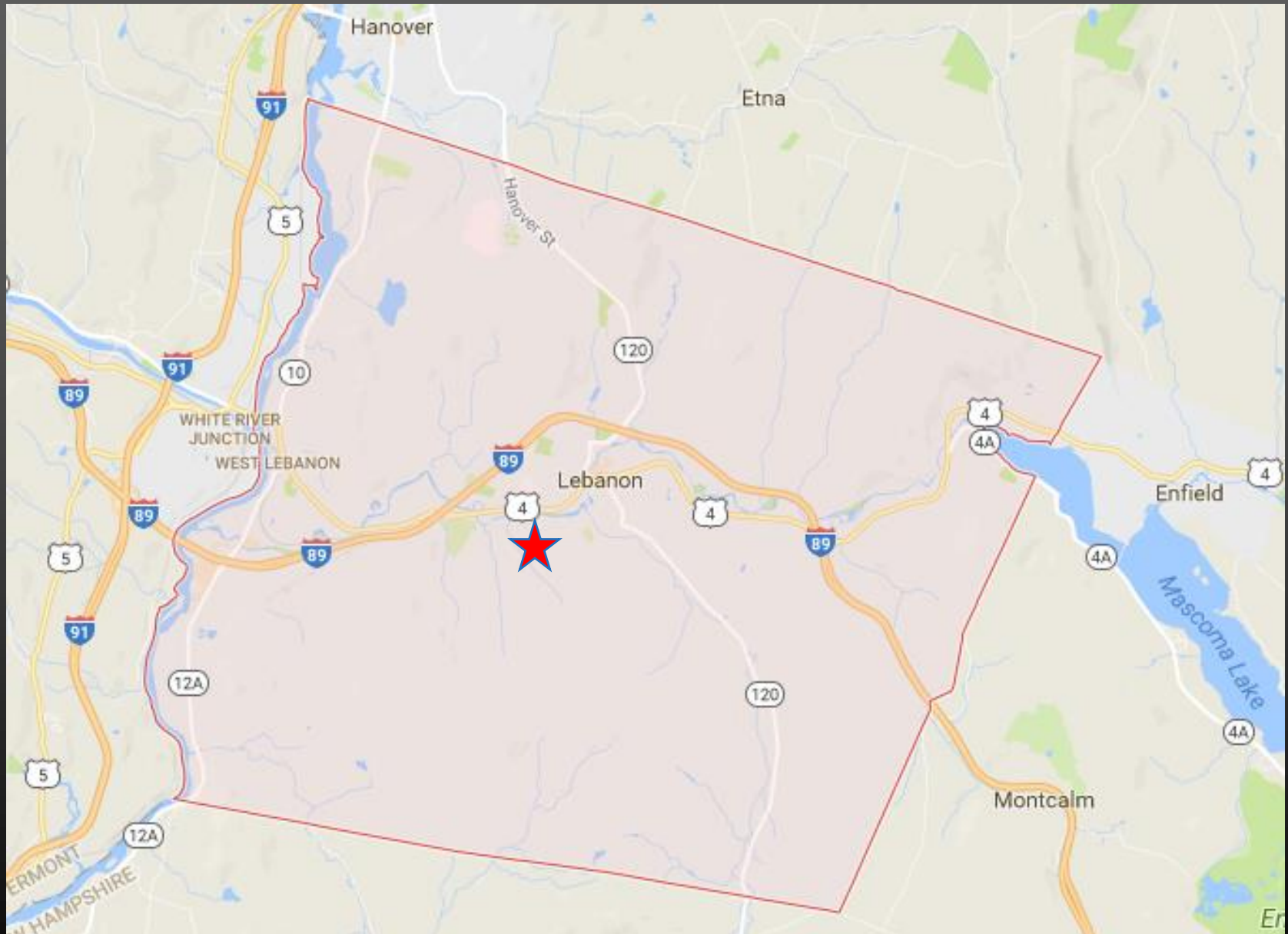
Key Criteria

- Large, Unfragmented, Natural Areas
- Adjacent to Existing Conservation Lands
- Corridor / Connectivity
- Rare & Endangered, Special Places
- Natural Communities - Portfolio Capture
- Co-occurrence
- Degree of Threat (e.g. development, etc.)**

= Preserving Biodiversity (and “cool places”)



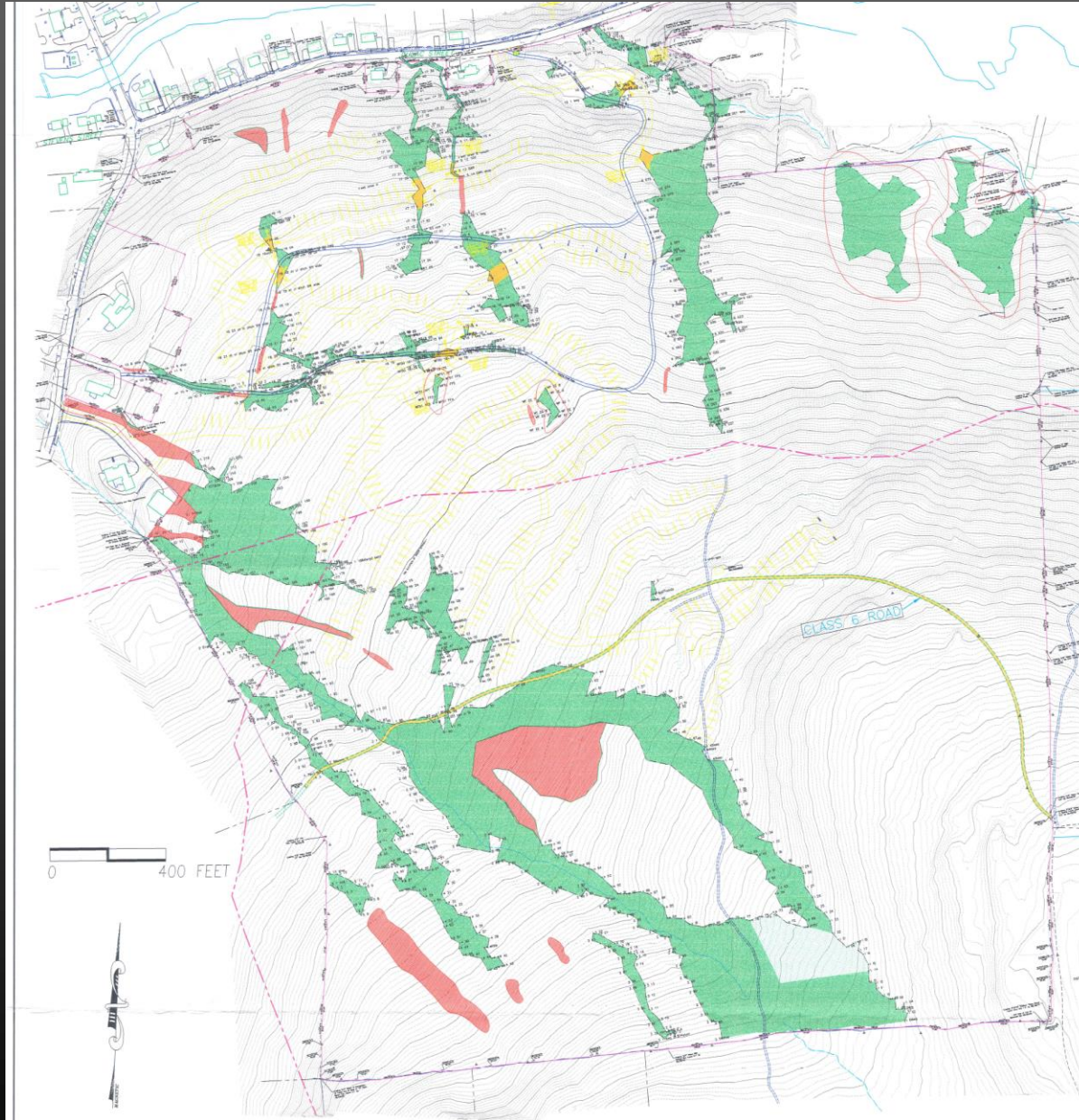
Site Locus – Ticknor Woodlands



Slayton Hill Rd / “Podgum Lane”



Wetland Mapping





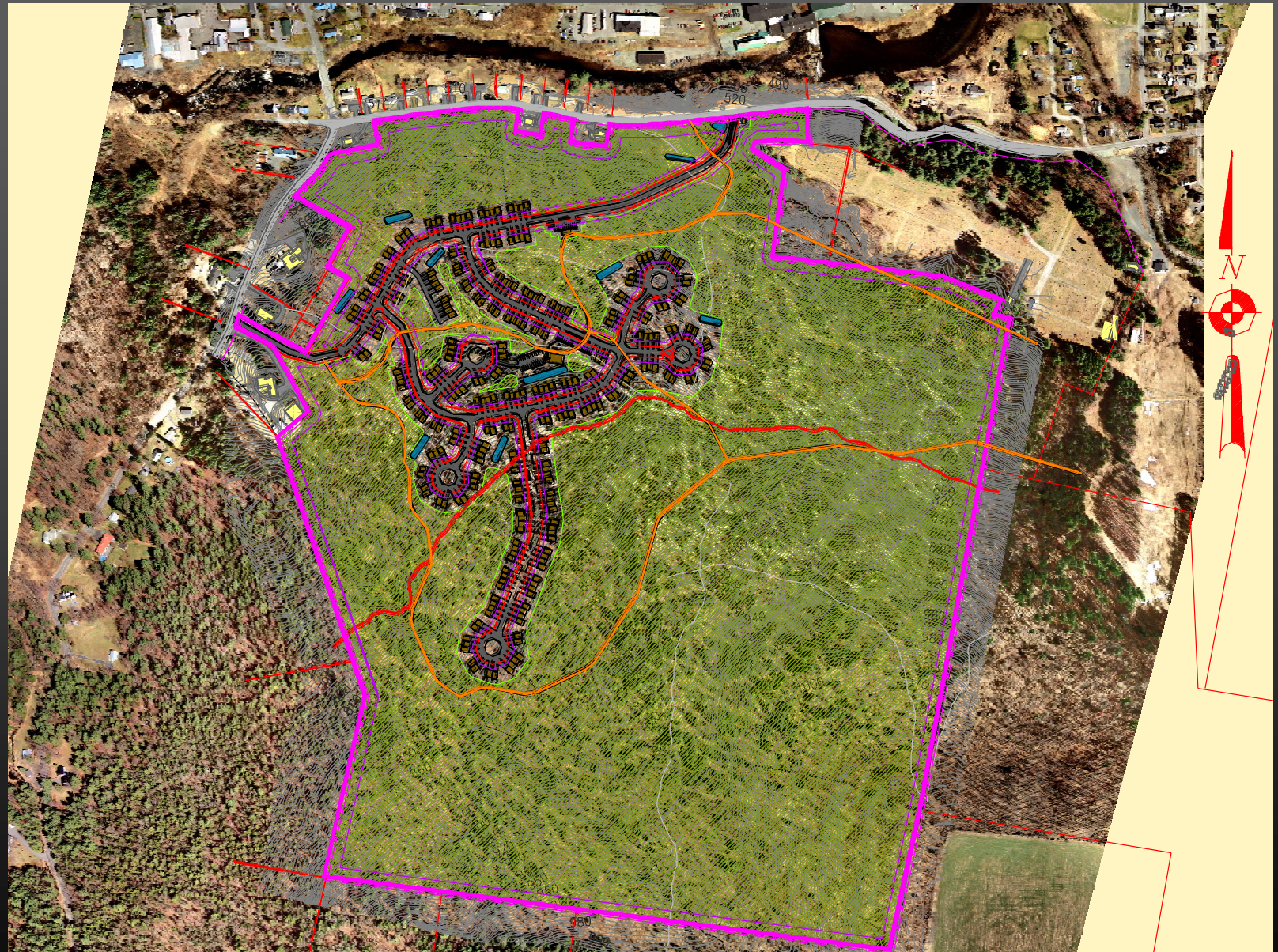


Brook A-1, upper portion, downstream of cross trail

GFI Proposal (2005 yr)



GFI Proposal – 318 Units (2006)



Wetland Buffer - 2012

CITY of LEBANON, NH



WETLAND CONSERVATION DISTRICT *PROPOSED*

Wetland Buffer

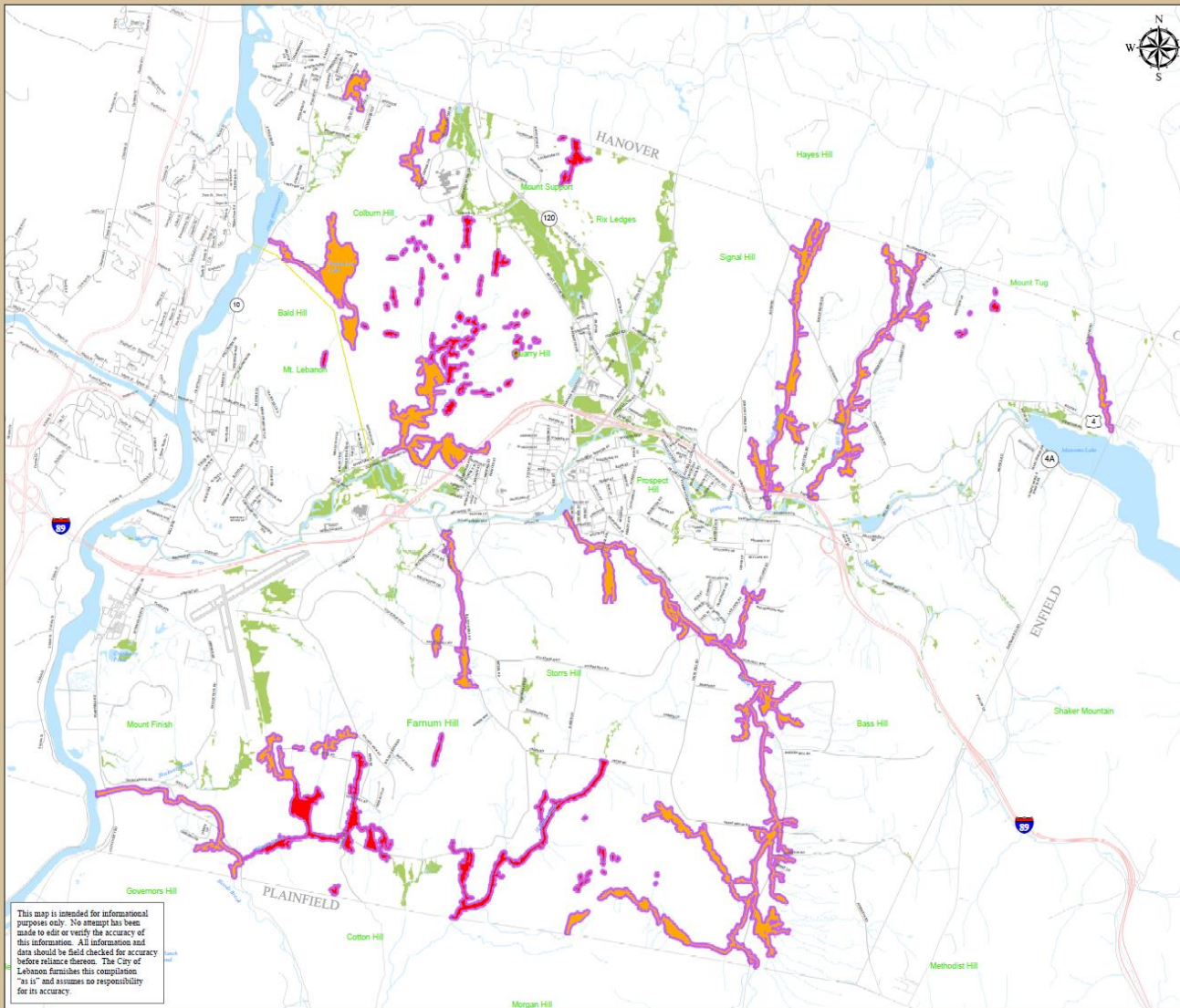
 100 feet

Wetlands

 Very High Value

 High Value

 Wetland (Other)



Stormwater Regulations – 2015/16

Section 6.6 – Stormwater Management

A. PURPOSE

The provisions and standards of this section are implemented for the purpose of:

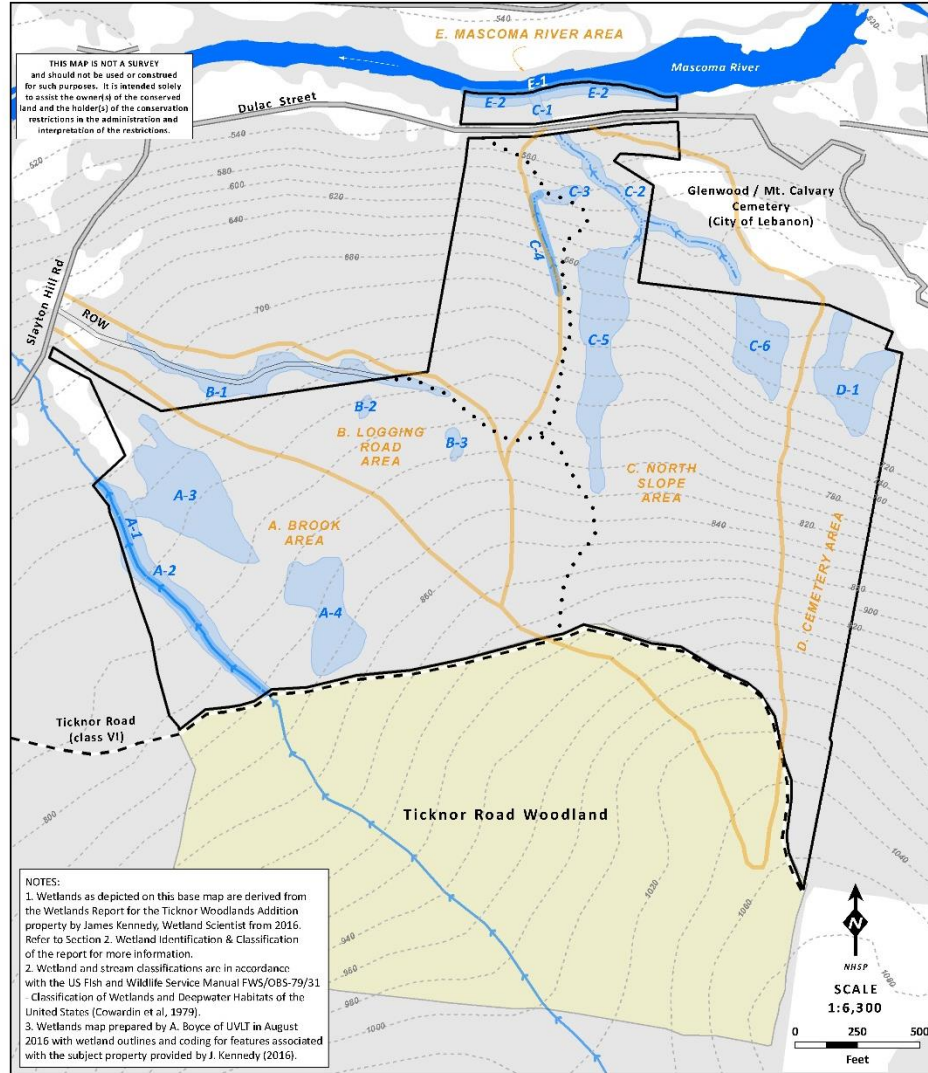
Managing stormwater runoff by establishing minimum requirements and procedures to control the adverse affects of increased post-development stormwater runoff, decreased groundwater recharge, and non-point source pollution associated with new development and redevelopment.

- Causing no increase in contribution of a pollutant for which a water body is impaired.
- Treating runoff discharged to a municipal drainage system, surface water body or wetland.
- Causing no discharge of runoff to an adjacent property in excess of runoff discharged in the existing developed or undeveloped condition.

Ticknor Conservation Purchase (2012yr)

Appendix 4b

Wetlands Map - TICKNOR WOODLANDS ADDITION - Lebanon, NH



Legend: Ticknor Woodlands Addition Property, Intermittent Stream, Forest Cover (from orthorectified), Trail / Woods Road

July 2 & 3rd, 2013
g.t. 2" of rain within 1 hr



July 2 & 3rd, 2013



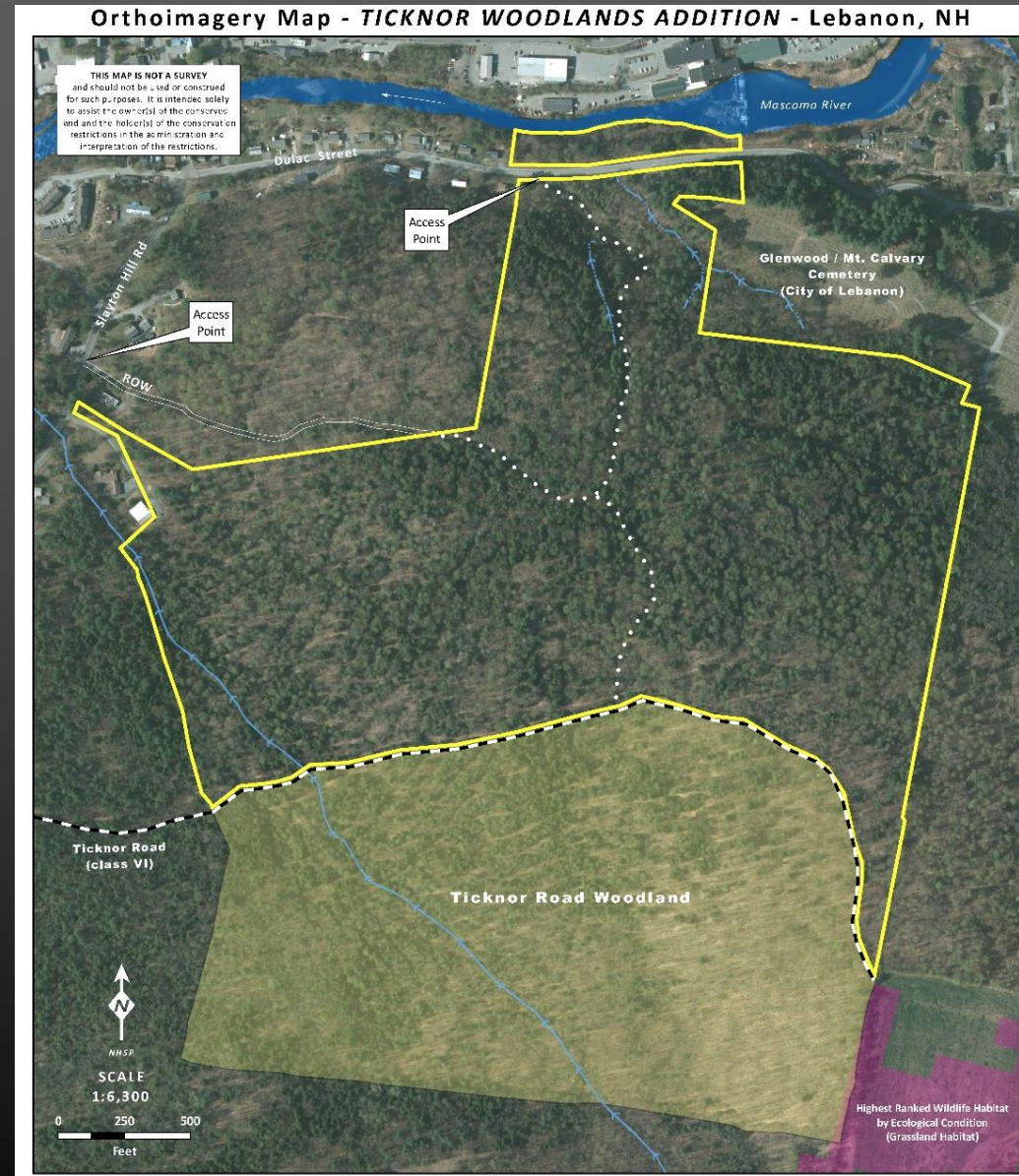
July 2 & 3rd, 2013



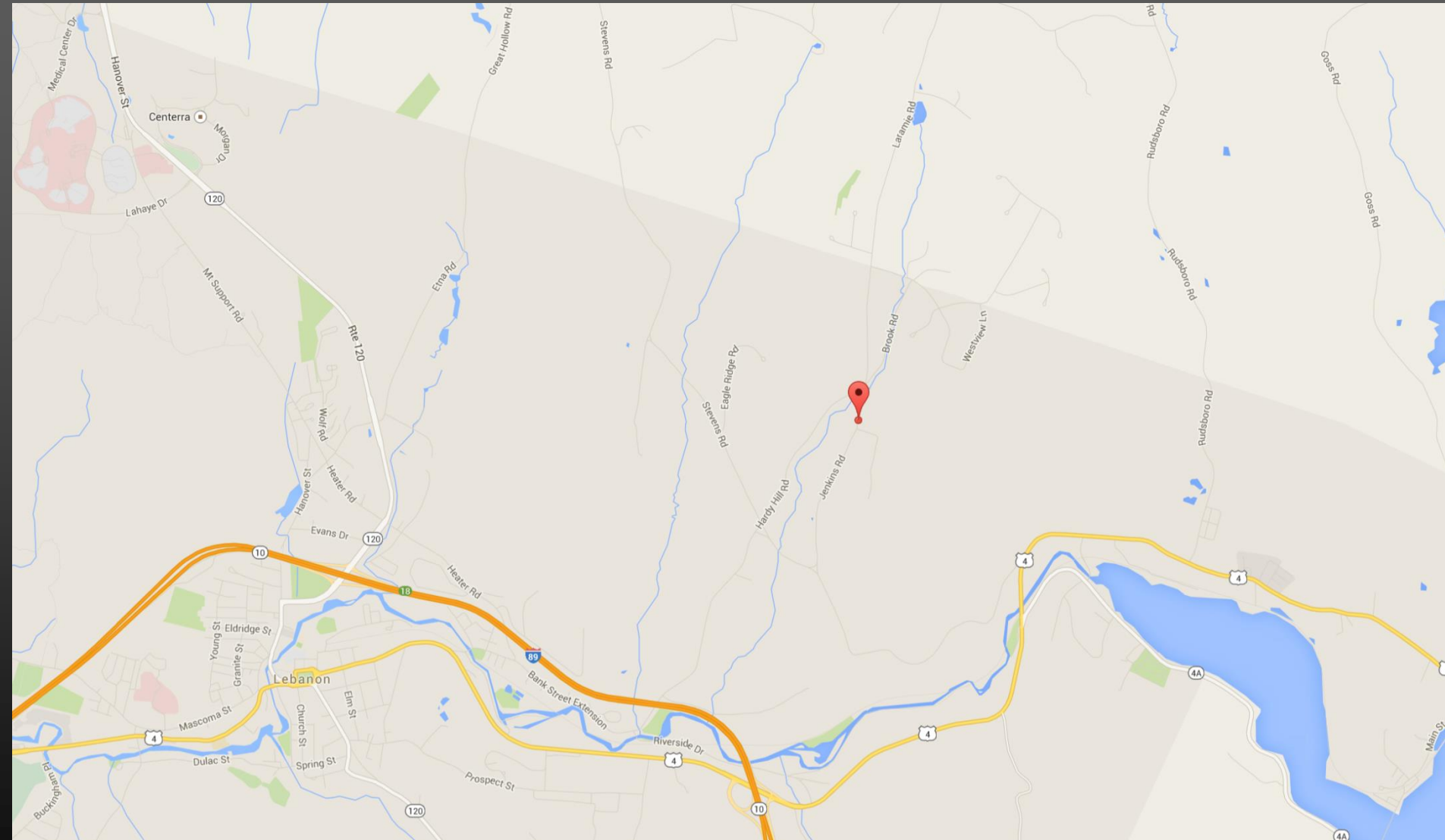
2017 - TICKNOR WOODLANDS ADDITION



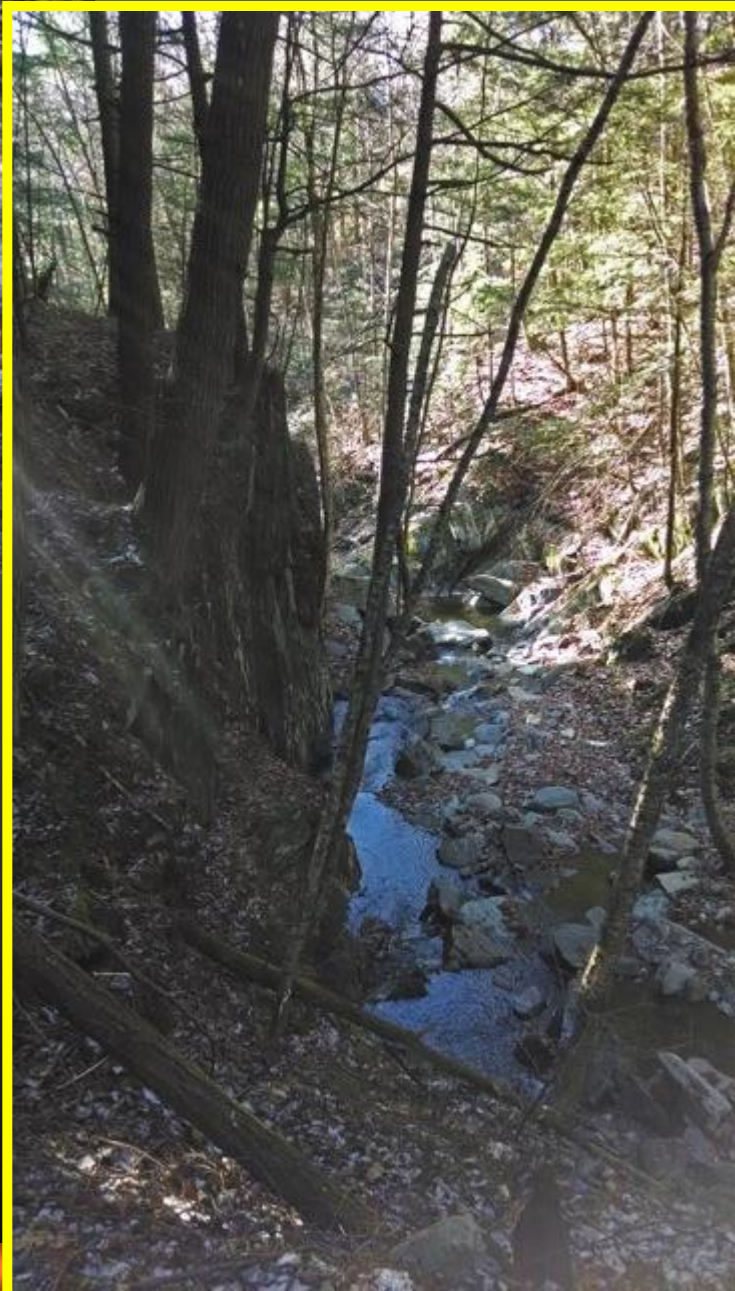
- 108 +/- acre parcel of former Dulac Estate
- 875 feet of Mascoma River shoreline
- 13.9 acres of forested wetlands necessary for habitat and soil stability on a hillside prone to flooding problems
- Historic relevance – cellar holes, stonewalls, historic Ticknor Road
- Opportunities for trail connections to other City-owned lands; walking distance to downtown
- Abuts City-owned and UVLT protected Ticknor Road Woodland Conservation Area (2012 acquisition)

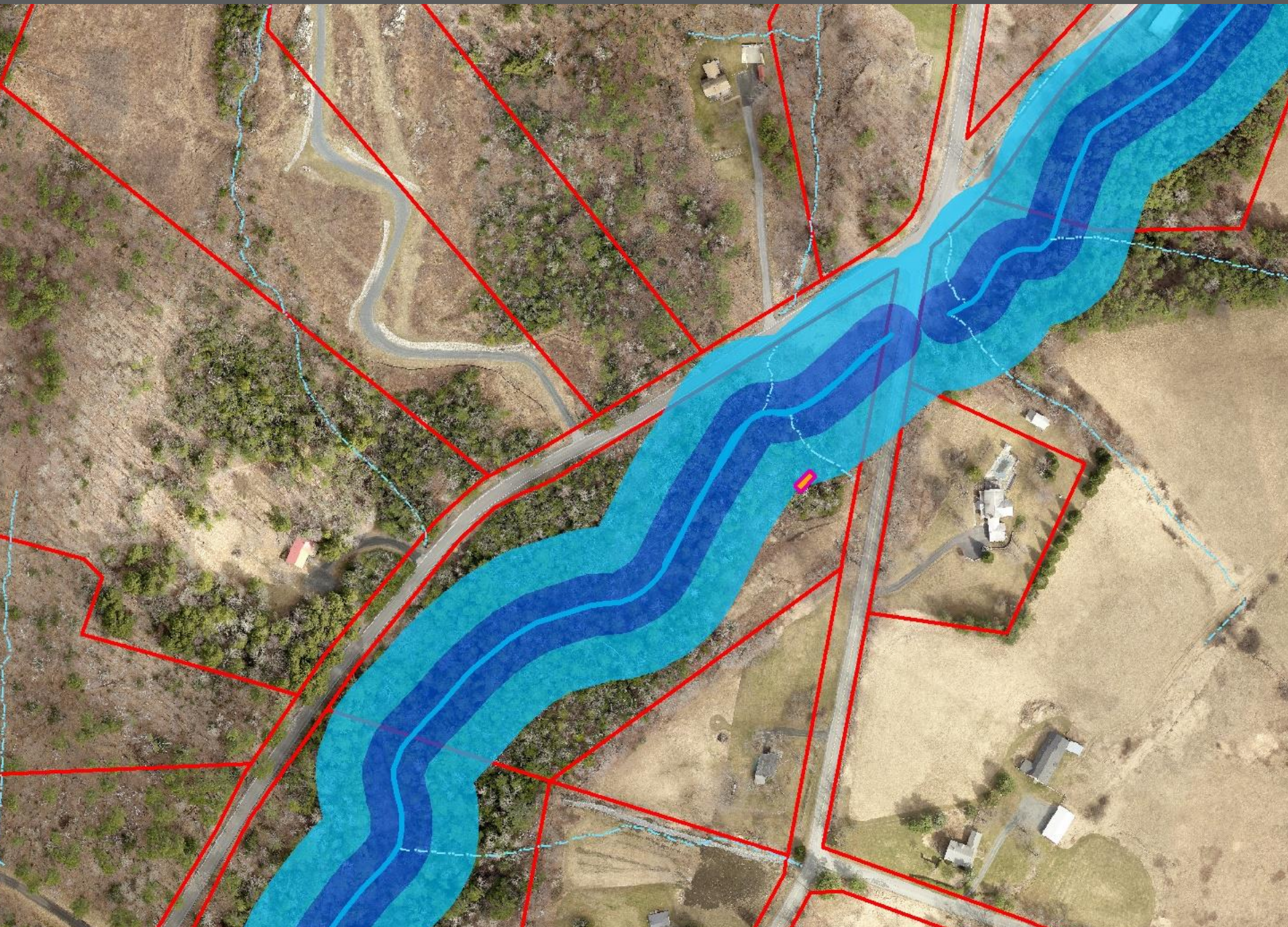


2015 Hardy Hill Brook Project







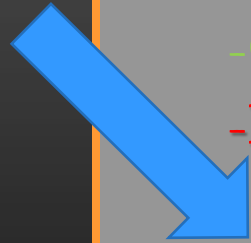
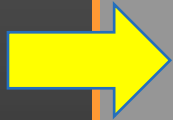


Lebanon Conservation Program 2017

Key Criteria

- Large, Unfragmented, Natural Areas
- Adjacent to Existing Conservation Lands
- Corridor / Connectivity
- Rare & Endangered, Special Places
- Natural Communities - Portfolio Capture
- Co-occurrence
- Degree of Threat (e.g. development, etc)**
- Resiliency Planning

Climate Adaptation



= Preserving Biodiversity (and “cool places”)